

High stability Excitation source

: Standard 532nm DPSS or 473nm LD Laser set.

Microscope Raman Sample Chamber

: 10x, 20x, 50x, 100x Objective Lens

3MP Camera & LED source for sample monitoring

VPG Spectrometer & TE cooled CCD detector set

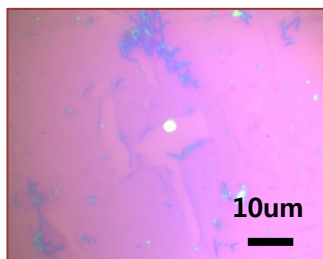
, Back-illuminated 1024x128pixels, -70C.

; Raman shift Range : from 90cm<sup>-1</sup> (~200cm<sup>-1</sup> for 473nm)

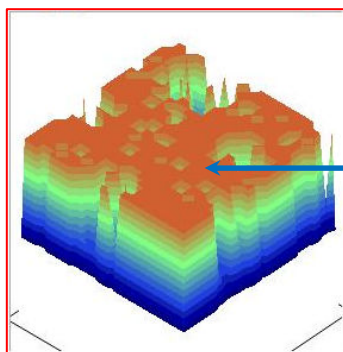
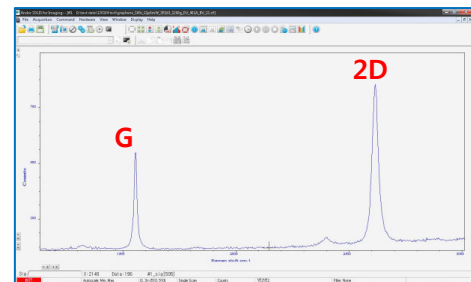
## Optional module

Dual or Triple Laser source available.

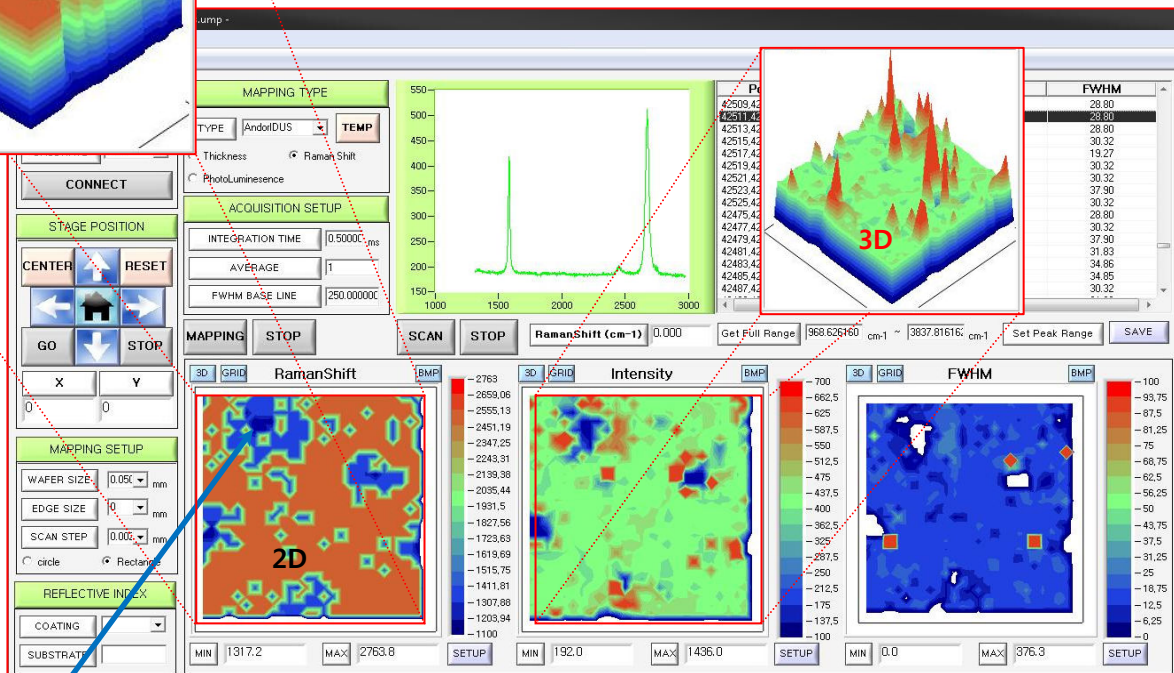
473nm, 488nm, 514nm Ar-ion, 632.8nm He-Ne, 785nm LD Lasers, etc.



Motorized XY stage module for Mapping system



Orange area : "2D" peak high



Blue area : "G" peak high