

RF Generator



RF Generator

Features

Super Performance

Microprocessor Control
High efficiency SMPS
High efficiency RF Amplifier Topology
Stable and reliable RF output power

High Reliability

Stable topology & Intensive RF Filter
Low interface noise
Reliable and durable parts and SMPS



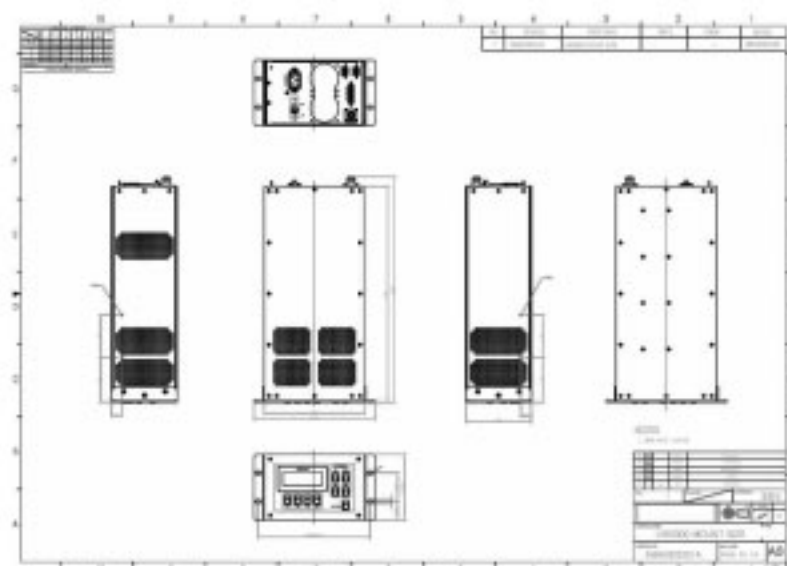
UniRF RF generators, coupled with its matching networks, perform extraordinary well in plasma-based thin-film manufacturing process. The URM&Pascal series of RF generators utilize sophisticated technology, providing enhanced product and process reliability. The URM&Pascal series deliver excellent performance in plasma-based processes for semiconductor, flat panel display, industrial thin film manufacturing.

Specifications

Physical	URG300	PASCAL600R1	PASCAL1000R1
Dimensions	241×350×132	480×500×132(19" Rack size)	
Weight	9.5kg	14kg	16kg
Electrical	URG300	PASCAL600R1	PASCAL1000R1
Frequency	13.56MHz ±0.1%		
AC Input Voltage	198Vac to 229Vac (Normal 220V, ±10%), Single Phase		
AC Input Current	3.5A	5A	8.5A
Max Output Power	300W	600W	1000W
RF Output Connector	N-female	N-female	N-female
Regulation	±1% of setpoint or 1W into a 50ohm load		
Output Accuracy	±1% of setpoint or ±0.5% at fullpower whichever is greater		
Output Impedance	50ohm		
Max Reflected power	10% of max output power		
Harmonic & Spurious	<- 45dBc		
Interface I/O	25-pin Analog / Digital User port, RS-232		
Cooling	Forced Air Cooling		

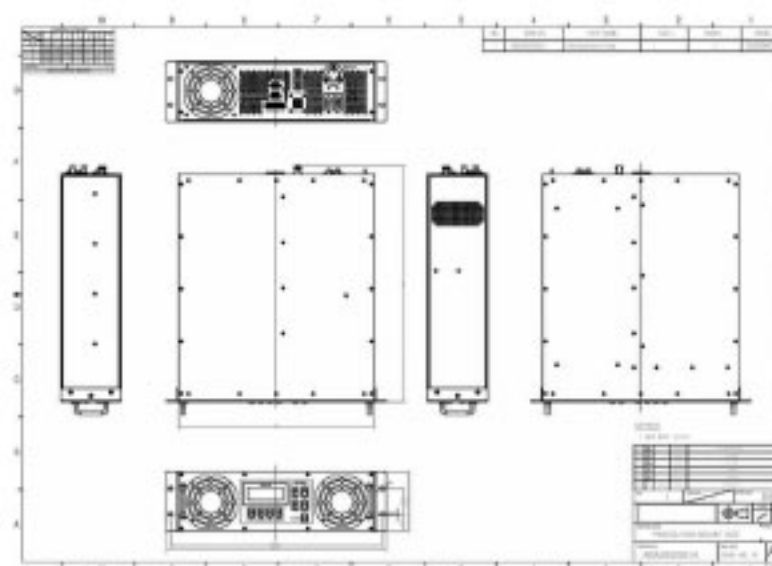
Dimensional Drawing

URG300



PASCAL600R1

PASCAL1000R1



RF Matching Network



RF Matching Network

Features

High tuning speed and accuracy

Multiple tap option
Automatic, manual and pre-set option available

High performance components

Wide impedance range
Digitally controlled tuning with intelligent motor drive technology
DC bias measurement circuit option

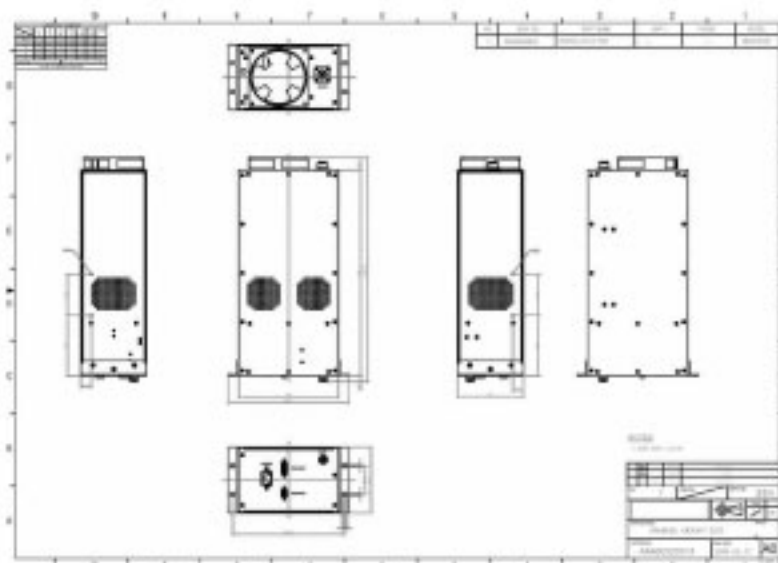
The URM automatic matching network show high tuning accuracy and to deliver extremely consistent output power through a wide range of plasma load condition at 13.56MHz and are easy to operate by combination with the URG or Pascal RF generator and integrate with any existing system.

Specifications

Physical	URM600	URM1500	URM3000
Dimensions	260×340×150	280×340×170	320×378×170
Weight	4kg	5kg	8kg
Electrical	URM600	URM1500	URM3000
Frequency	13.56MHz, ±0.1%		
AC Input Voltage	198Vac to 229Vac (Normal 220V, ±10%), Single Phase		
RF Input connector	N-Female	N-Female	N or HN-Female
RF Output connector	HN-Female	HN-Female	Direct Connection
Max Transfer power	600W	1500W	3000W
Max Load Voltage	1500V	7500V	15000V
Max Load Current	10A	70A	70A
Matching Range	R:2~30Ω, X:100~100Ω		R:1~20Ω, X:100~60Ω
Input Impedance	50ohm		
Operating Mode	Auto / Manual Mode both available		
Auto Turning Time	< 3sec (Continuous tuning : < 0.5sec)		
Auto Turning Accuracy	< 3W or 1% of maximum input power		
Cooling	Forced Air Cooling		Water Cooling

Dimensional Drawing

URM600



URM1500

